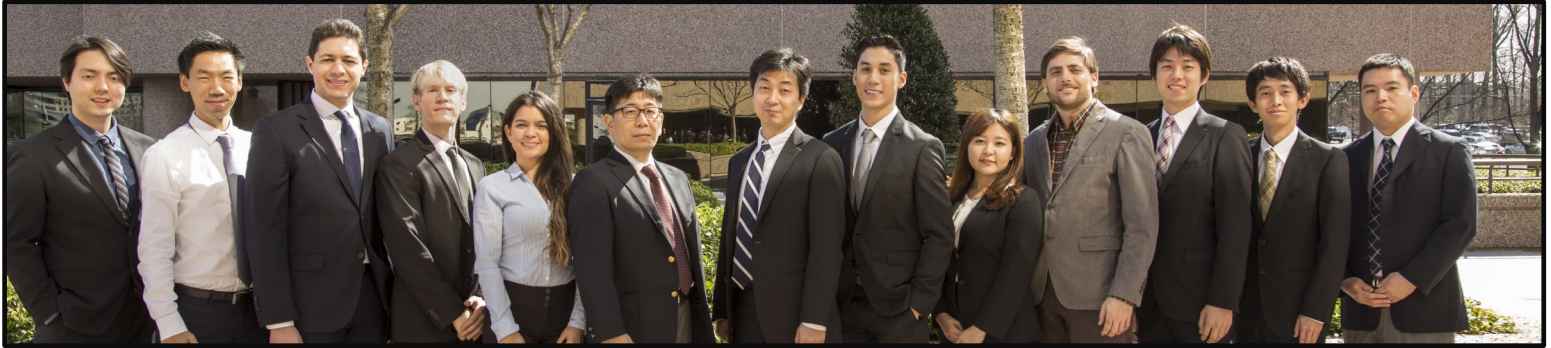


Civil Engineering Research Services Construction



NEXCO-West USA excels in providing research services on civil engineering and transportation topics, with a focus on US and Japanese industry trends. We own and operate highway structures across Japan, and have accumulated knowledge about what works and what doesn't. Get insight on construction and design practices so that you can fuel your business decisions.



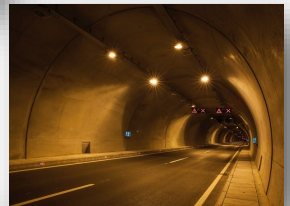
Roadways, Pavements



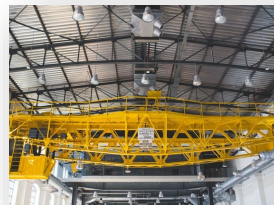
Bridge Construction



Tunnel Construction



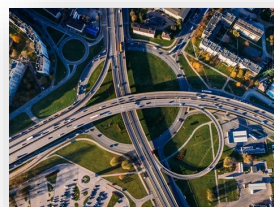
Toll Booth, Gantry Construction



Highway Rest Area Construction

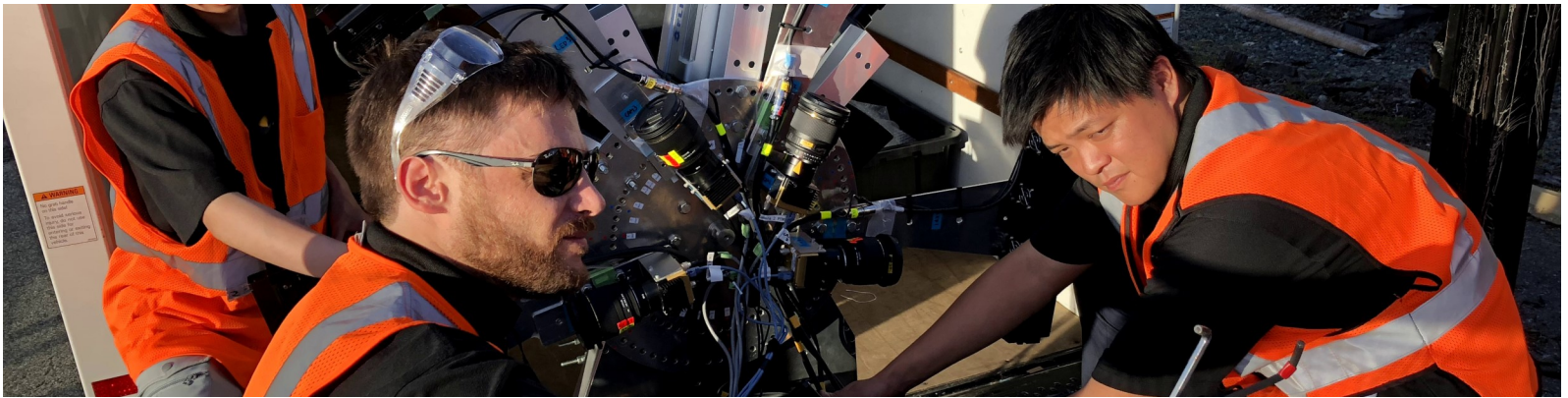


Highway Facility Construction



Our Advantage

We are able to benchmark (compare and contrast) practices in the US and Japan by leveraging our global professional network, our knowledgeable team of engineers, and our collection of information on private and public engineering organizations. We have served past clients by summarizing the information they need to accomplish their next construction project, like results from studies on newly developed materials or reports on case studies.



Past Research Projects

Study of Highway Rest Area Design in Maryland

A client from Osaka, Japan requested to collect information on the construction and design of newly built rest areas in the state of Maryland. The client wished to consider new perspectives as they renovated their own rest areas. The maximization of user convenience was their main focus.

Study on Accelerated Bridge Construction

The use of ABC is still not widely adapted in Japan, and a highway owner wished to learn how ABC construction could reduce the amount of time bridges are taken out of service during construction. NEXCO presented a case study about an application in the state of Pennsylvania.



+1 (703) 734 - 0281
info@w-nexco-usa.com
www.w-nexco-usa.com

NEXCO - West USA
8300 Boone Blvd. Suite 260
Vienna, VA 22182

